

WC 5000 Series

Bringing Information to Light

New now with HD-SDI, SD-SDI and Dual Link DVI capture inputs

Video Wall Controller / Processor

ICS offers a complete line of Video Wall Controllers / Processors for your Command-and-Control Centers, Network Operation Centers, Transportation, Public Information, Corporate Facilities, and Advertising.

WC 5000 series Video Wall Controller supports the following inputs and outputs:

Direct connect capture inputs:

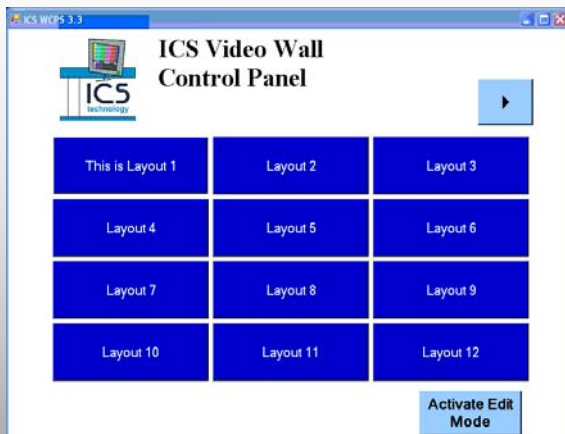
DVI / Dual Link DVI / HDMI / HD-SDI / SD-SDI / VGA // YPrPb HD Component Video / S-Video

Network connect inputs:

Video camera capture over IP
Desktop capture over IP

Outputs:

VGA (up to 1920 X 1200 resolution)
DVI (up to 1920 X 1200 resolution)



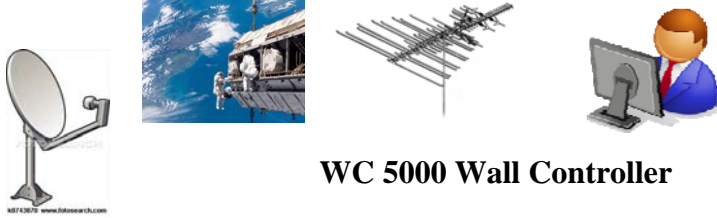
ICS Layout Control Software for Layout Presets and Editing Layouts

The software also includes an easy-to-use preset layout recall and editor that can be located on the video wall controller or any PC connected to the video wall controller over the network.

The ICS layout recall control panel is easy to use and configure. The system comes set up with 19 preset layout buttons. You can add as many additional preset layout buttons as your system requires. The button labels can be edited. Each preset layout can be easily edited just by selecting the activate edit mode and entering the password.

We offer our WC 5000 series video wall controller unit separately or as a complete system including screens, mounting, installation support as required and training. Feel free to contact us with any questions you may have on your video wall project requirements.





WC 5000 Wall Controller

You have complete control of the inputs and outputs from the local control screen at the video wall controller or remotely from any PC network connected to the wall controller.



Wall controller software offers gap compensation for LCD screen mullions

Workstation screens can be captured over network VNC connection

IP video cameras can be captured on the WC5000 or by using the ICS IP 1000

WC 5000 video wall controller can be configured with the following inputs and outputs:

Outputs: 4 to 40 RGB / DVI Output — Resolution up to 1920 X 1200 per screen

Direct Inputs: 1 to 64 RGB / DVI / HD Component / HDMI Input cards

- RGB analog — Resolution up to 2048 X 1536
- DVI — Resolution up to 1920 X 1200
- DVI Dual Link— Resolution up to 4000 X 4000
- HD-SDI / SD-SDI — Resolution up to 1080P
- HD component / HDMI — Resolution up to 1080P
- 4 to 128 Video / S-Video Inputs — Resolution NTSC, Pal and S-Video

Network Inputs:

- Video over IP cameras captured on the WC5000 or by using the ICS IP 1000 1U unit. This unit captures up to 16 IP videos. Additional IP1000 units can added. Each video over IP camera image can be resized and positioned anywhere on the video wall.
- Workstation Desktop capture over IP via VNC connection.

The WC 5000 offers an RS-232 software package that you can use to turn on and off your video wall screens or any other RS-232 controlled device. We are also compatible with AMX and Crestron controllers .

WC 5000 system specifications:

19" 4U industrial rack-mount unit : Intel Core 2 Quad processor based SBC

Processor Intel Core 2 Quad Intel Core i5-2400S 2.50GHz **Redundant** 500 W hot-swappable Power supplies

Memory 4GB DDR3 1333MHz ECC Unbuffered **Ethernet** Qty 2 10/100/1000 network ports

Operating System Microsoft Windows 7 Pro 64 Bit, **Hard Drives** Dual 250GB 7200RPM SATA-II / Hot Swap HDD Bay SATA-II Military Sled, **RAID** Configure To Level 1

ICS Technology Inc. PO Box 4063 Middletown, NJ 07748 732-671-5400 Fax 732-671-1420 www.icstec.com