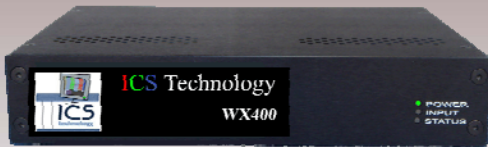


ICS Technology, Inc.

WX400 and WX400 1U



WX400



WX400-1U (19" Rack Mount)

The ICS Technology WX400 and WX400-1U (19" Rack Mount) are wall controllers that accept one, DVI standard single or dual-link, DVI input and can display this across up to four screens. Each output can be driven as DVI or analog RGB (VGA), and can represent an arbitrary crop region of the original input image. The output resolution and frame rate do not need to be related to that of the input as the ICS Technology WX400 will optionally upscale and frame-rate convert each cropped region independently. Additionally, each output can be independently mirrored or rotated through 90°, 180° or 270° to support creative mixes of landscape and portrait screens. Output configuration is programmable via a USB connection to a PC with custom APP.



Supports full bezel width and height correction for all types of displays.

Ideal for use with edge blending projectors – supports image overlapping.

Splits a single DVI input into four independent screen outputs.

Accepts Dual Link DVI, Single Link DVI or HDMI* input. (*HDMI input requires the optional DVI/HDMI Adapter)

The input EDID is programmable to allow arbitrary input resolutions and frame rates.

Flexibly drives four displays, each from any selected region of the input image.

Supports both DVI and analog RGB (VGA) output screens.

Stand alone operation supports auto-detecting of input resolution and output screen native resolutions.

Output screen configuration is defined by internal non-volatile memory.

Output configuration is programmable via a USB connection to a PC.

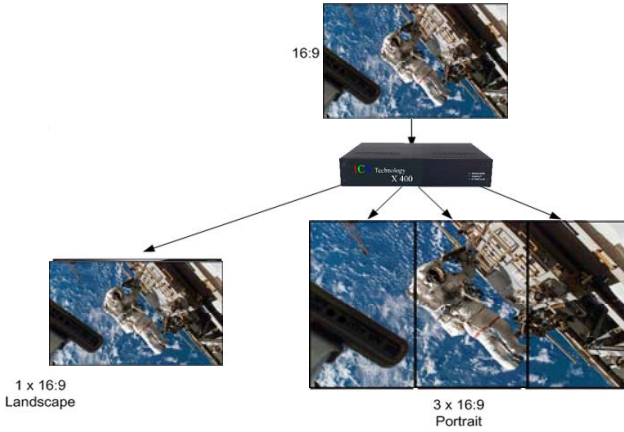
Graphical utility allows easy control of cropping, scaling, rotation and gaps.



Dual-Link DVI Input supports high resolutions

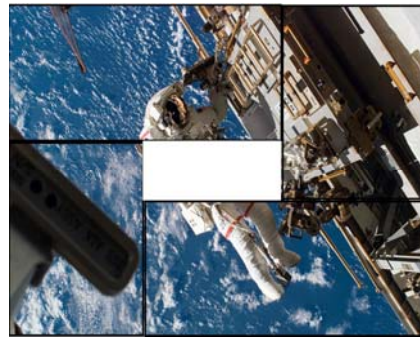
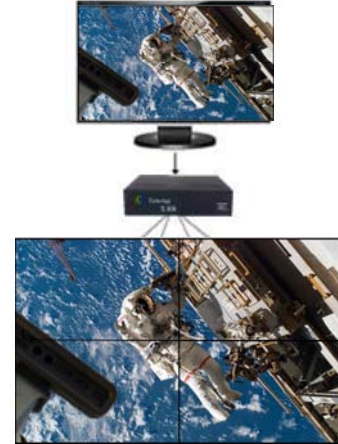
Dual-Link DVI input will support high resolution pixel-perfect source images for display. The ICS WX400 can additionally present a default native resolution to the source to allow still higher custom resolutions at reduced frame rate, but still remain within the capabilities of the Dual-Link interface.

Most standard graphics card sources will output at this native resolution. Since the WX400 will scale and frame-rate convert, using a triple-buffered capture architecture, the output screens can still be driven at their preferred frame rates and resolutions.



Genlock

The ICS WX400 will auto-sense input and output frame rates and automatically genlock when possible. Four identical output monitors will automatically be driven genlocked and if the input timings match they are additionally genlocked and clock-locked to the source signal.



SPECIFICATIONS

Physical Dimensions

WX400 - 235 x 175 x 44mm/9.25" x 6.9" x 1.75"

Operating Temperature Range

0 - 35 DegC /32 - 96 DegF

Power Requirements

5V DC, 18W. Universal mains power adapter supplied (100-240V)

USB 2.0

ICS WX400 -1U: Internal PSU

Full speed (12Mbps/s) operation supported

Cooling

Cooling by internal fan. The input/output vents should not be restricted.

1x Dual link DVI capture

Note: the WX400 -1U has a larger fan producing less noise.

Input Surface

To 330Mpixels/s

4k x 4k maximum

WX400 Single link DVI or analog RGB outputs

To 165 Mpixels/s

Output Screens Resolutions

Up to 2.5 Mpixel (maximum 2048 pixels in either direction)

Arbitrary Up Scaling

64x original surface area

Firmware Support

Updates supported via USB

MTBF

50,000hrs

Warranty

3 years on both models