

WC 5000-B Series Bringing Information to Light

NEW DisplayPort 1.2 capture up to 4K Resolution 3840 X 2160 60Hz

HDMI Input is HDCP compliant and

Capture IP cameras and workstations over IP network

Video Wall Controller / Processor

ICS offers a complete line of Video Wall Controllers / Processors for your Command-and-Control Centers, Network Operation Centers,

WC 5000-B series Video Wall Controller supports the following inputs and outputs:

Direct connect capture inputs:

DVI / DVI DL / **HDMI is HDCP compliant**/ HD-SDI / SD-SDI / 3G-SDI / VGA / HD Component / Video / S-Video

Network connect inputs:

Video camera capture over IP

Desktop capture over IP

Outputs: per screen

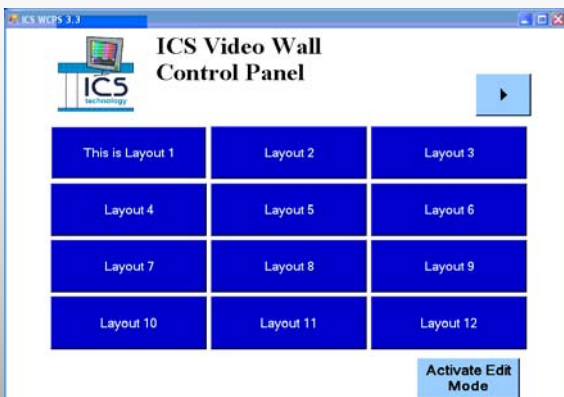
Display Port (up to 2560 X 1600 resolution) DVI (up to 1920 X 1200 resolution)

Output drives 15 m without extenders
30 m with our extender powered by display Port. Outputs can be landscape or portrait with mullion compensation.



The software also includes an easy-to-use preset layout recall and editor that can be located on the video wall controller or any PC connected to the video wall controller over the network.

The ICS layout recall control panel is easy to use and configure. The system comes set up with 19 preset layout buttons. You can add as many additional preset layout buttons as your system requires. The button labels can be edited. Each preset layout can be easily edited just by selecting the activate edit mode and entering the password. Easily controlled from most third party control devices.



ICS Layout Control Software for Layout Presets and Editing Layouts

We offer our WC 5000 -B series video wall controller unit separately or as a complete system including screens, mounting, installation support as required and training. Feel free to contact us with any questions you may have on your video wall project requirements.





4K VIDEO INPUT



WORKSTATION CAPTURE OVER NETWORK



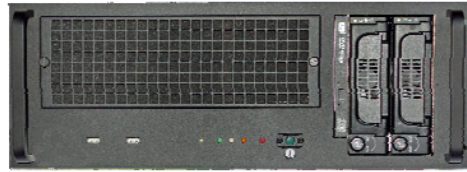
CABLE AND SATELLITE BOXES

SECURITY CAMERAS



BLU-RAY PLAYERS

WC5000-B Wall Controller



IP CAMERAS



You have complete control of the inputs and outputs from the local control screen at the video wall controller or remotely from any PC network connected to the wall controller.



Wall controller software offers gap compensation for LCD screen mullions

Workstation screens can be captured over network VNC connection

IP video cameras can be captured on the WC5000-B or by using the ICS IP 1000

WC 5000-B video wall controller can be configured with the following inputs and outputs:

Outputs: 4 to 48 Display Port / DVI Output — Display Port Resolution up to 2560 X 1600 60 Hz
3840 X 2160 30 Hz per screen

DVI Resolution up to 1920 X 1200 per screen. Output drivers 15 m with no extender
30 m with our extender powered by display port

Direct Inputs: 1 to 64 RGB / DVI / DVI Dual Link / HD Component / HDMI / HD-SDI / SD-SDI Inputs

- DisplayPort 1.2 capture up to 4K Resolution 3840 X 2160 60Hz
- RGB analog — Resolution up to 2048 X 1536
- DVI — Resolution up to 1920 X 1200
- DVI Dual Link— Resolution up to 4096 X 4096 30 Hz
- Support for 330MHz pixel clock and a maximum Input capture 4096 X 4096
- HD video capture for all progressive and interlaced DVI/HDMI modes
- Captures Quad-HD (2160p) Digital Cinema modes at 24/25/30fps
- HDMI — HDCP compliant Resolution up to 1080P
- HD-SDI / SD-SDI — Resolution up to 1080P
- HD component —Resolution up to 1080i
- 4 to 128 Video / S-Video Inputs — Resolution NTSC, Pal and S-Video

Network Inputs:

- Video over IP cameras captured on the WC5000 or by using the ICS IP 1000 1U unit. This unit captures up to 16 IP videos. Additional IP1000 units can be added. Each video over IP camera image can be resized and positioned anywhere on the video wall.
- Workstation Desktop capture over IP via VNC connection. The WC 5000 offers an RS-232 software package that you can use to turn on and off your video wall screens or any other RS-232 controlled device. We are also compatible through RS-232 or Telnet with AMX and Crestron or any other

WC 5000 –B system specifications:

Chassis 19" 4U industrial rack-mount unit
 Processor Intel Core i7-2600 3.4GHz w 8MB RAM
 Memory 8 GB DDR3 1333MHz
 Operating System Microsoft Windows 7 Pro 64 Bit
 HDD Bay hot swappable
 RAID Configure To Level 1

Optical Drive 22X SATA DVD-RW
 Power Supplies redundant 600Watt 100/240 AC hot-swappable
 ECC Ethernet dual port 10/100/1000
 Hard Drives Dual 500GB 7200RPM SATA-II
 SATA-II Military Sled
 Dimensions: W 17" (19 Rack) D 18" H 6.75 (4u Rack)